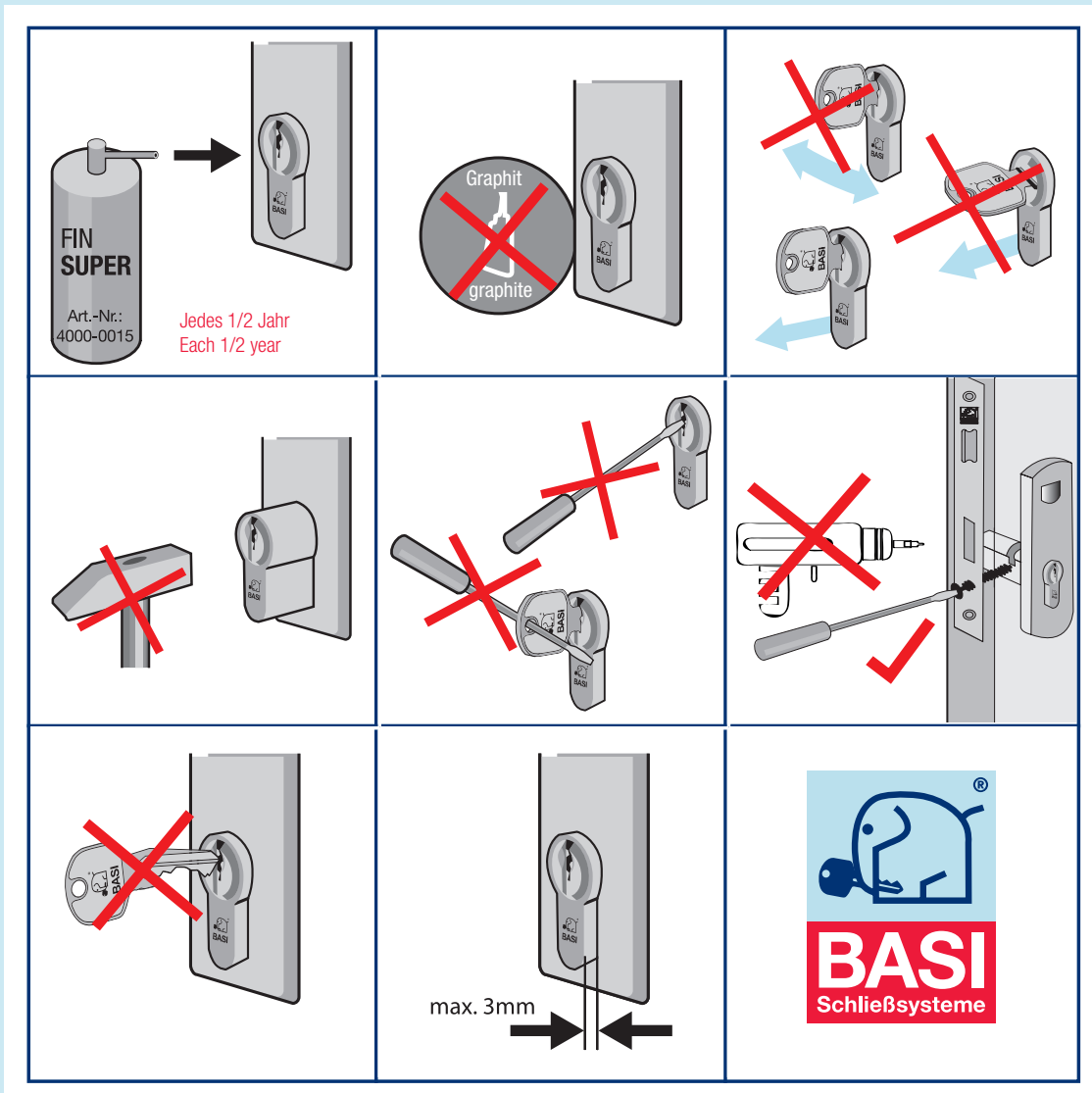


## Fitting and care advice for locking system cylinders



As part of the technical development of our products, the lubricant for our locking cylinders has been adapted to the state-of-the-art.

The graphite used for many years has been replaced by a newly developed lubricant, based on mineral and synthetic oil with the addition of special lubricating agents. The lubricant is characterised by:

- Improved gliding property
- Long-term effect
- Water resistance
- High penetration
- Low adhesion of dirt and abrasion dust
- Temperature range: -40 to +170 degrees Celsius

Please use our **FIN SUPER** care product, art. no. 4000-0015

*Attention: Do not re-lubricate the locking cylinders with graphite!*