

mySafe

Fingerprint

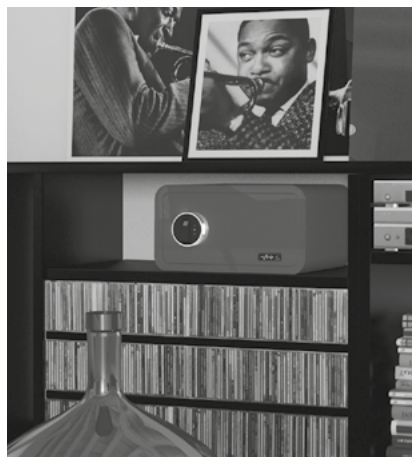
350 / 450



High intensive alarm function

2 emergency keys included

back up power supply included



OPERATING MANUAL



facebook.com/BASIGmbH



@basi_gmbh



www.basi.eu

General notes

Intended use

The electronic furniture safe keeps important documents, papers, contracts, certificates and electronic data media safe. The electronic furniture safe can be used privately or in the office.

Follow the instructions in this manual on how to use the electronic furniture safe correctly.

Warnings: No hazards are to be expected, if the device is used correctly and in accordance with the instructions. Small parts and packaging materials can be swallowed by children and lead to choking! Make sure that small parts and packaging materials do not get into the hands of children. Dispose of the packaging material immediately.

The manufacturer expressly reserves the right to make technical changes.

Disclaimer

The manufacturer accepts no liability for damage or injury resulting from incorrect handling.

Cleaning/maintenance

Slight soiling of the electronic furniture safe can be removed with a damp cloth.

Disposal



Help to protect the environment and dispose of the product and the packaging materials in accordance with the local regulations.

The device may not be disposed of with the regular household trash, it must be collected separately.

Scope of delivery

Check that the delivery is complete:

- 1x electronic furniture safe
- 1x operating manual
- 2x keys

© Copyright

Reproduction or duplication (even excerpts thereof) is forbidden without approval of: BASI GmbH
Konstantinstraße 387
41238 Mönchengladbach, Germany

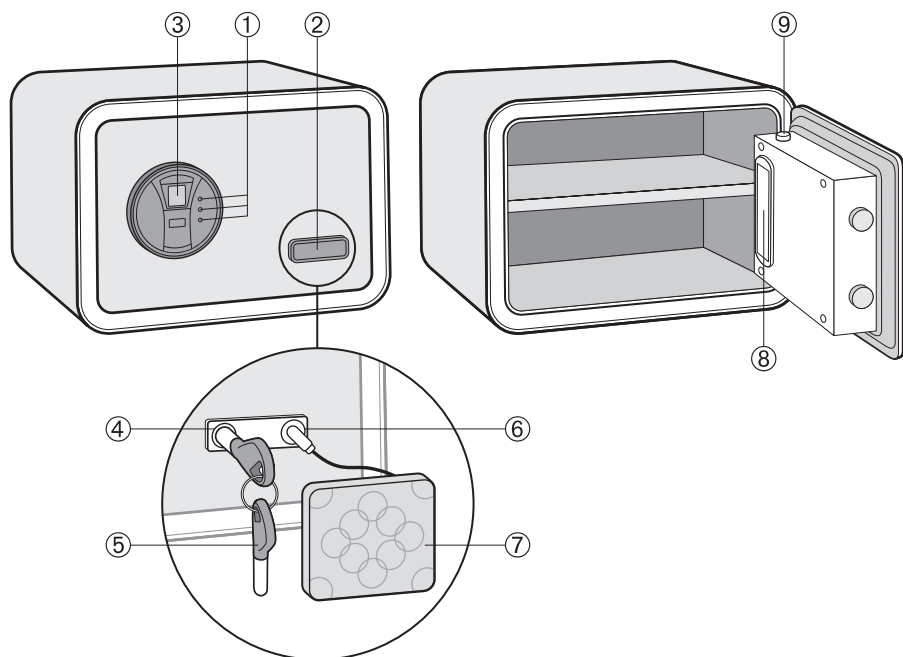
2025

This publication, including all its parts, is protected by copyright.

Any use outside the narrow limits of copyright law without the consent of BASI GmbH is not allowed and is liable to prosecution.

This applies in particular to duplications, translations, microfilming and importing and processing in electronic systems.

BASI GmbH, Konstantinstraße 387,
41238 Mönchengladbach, Germany



- 1 Light (yellow, green, red)
- 2 Plate
- 3 Fingersensor
- 4 Emergency keyhole
- 5 Emergency keys
- 6 Battery-power check inlet
- 7 Battery backup system
- 8 Built-in battery box
- 9 Reset button



1 First time operation

Open with the emergency key

1. Uncover the plate at the bottom of the safe to reveal the emergency keyhole and battery-powered jack inlet.
2. Insert the emergency key into the keyhole, and turn the key counterclockwise.
3. Do not release the key; otherwise the key will return to its original position.
4. Turn the handle clockwise to open the door.
5. Open the battery box cover on the back of the door.
6. Mount four AA batteries in the battery box.

Open with fingerprint

1. Insert four batteries into the battery back-up system.
2. Uncover the plate at the bottom of the safe to reveal the jack inlet for the battery back-up system.
3. You will hear two beeps. Afterwards put your finger on the scanner.
4. First a green light will flash, afterwards the yellow light flashes.
5. Now you have 5 seconds to open the safe.

Saving a fingerprint

1. Push the green button on the inside of the door. You will hear a short beep and a yellow light will flash once on the outside of the door. A green light will flash several times.
2. Scan your fingerprint.
3. After a long beep, a green light will flash when the fingerprint was saved. If the fingerprint could not be saved, a red light will flash. You have to repeat. In this case repeat the procedure.
Capacity: 100 fingerprints

2 Opening & closing the safe

Opening

1. Enter your fingerprint. You will hear 1 beep, and yellow light will turn on, green light flashes, the system begins to test your fingerprint.
2. If you enter successfully, you will hear 2 beeps. Green light and the magnet actuation will last for 6 seconds.
3. If you enter unsuccessfully, you will hear 3 beeps, and red light will turn on.
4. If you enter unsuccessfully 3 times in a row, yellow light will flash, and alarm will sound for one minute.

Closing

1. Close the door and turn the handle counterclockwise to close.

Delete all fingerprints

To delete all fingerprints, press the red button on the inside of the safe door for five seconds. You will hear a long beep. When all fingerprints are deleted, the green light will flash. The safe is reset now. (see point 1)

3 Alarm

Vibration alarm mode

The vibration alarm has to be activated before in operation.

1. To activate the alarm, press the red button on the inside of the door.
2. You will hear a beep and a yellow light will flash on the outside of the door.
3. When the alarm was activated once it will sound for one minute, when the safe moves or gets shaken.
4. To stop the alarm scan your finger-

print. Afterwards it has to be activated again.

5. The alarm can be triggered with a closed as well as with a closed door.

4 Battery

Low battery level

If the green and the red light flashes at the same time, when scanning your fingerprint, the battery level is low.

Battery replacement

If the batteries are dead, open the safe with the battery backup system. Replace the batteries.

5 Fingerprint is not recognized and Emergencies

If the safe does not recognize your fingerprint or there is an error in the electronic of the safe, open the safe as follows:

1. Uncover the plate at the bottom of the safe to reveal the emergency key hole.
2. Insert the enclosed emergency key and the key anticlockwise. Do not let the key loose.
3. Turn the handle clockwise to open the safe.
4. If your fingerprint can not be recognized anymore, save it again.

6 Tips and warnings

- Do not store the user manual, emergency key or the external power supply box in the safe.
- If the safe is not in use for extended periods of time, remove the batteries to prevent damage to the safe's electronic liquid system.

- If mounting the safe onto a wall, ensure that the wall is structurally secure.

© Copyright

Reproduction or duplication
(even excerpts thereof) is forbidden
without approval of: BASI GmbH
Konstantinstraße 387
41238 Mönchengladbach, Germany

2025

This publication, including all its parts, is
protected by copyright.

Any use outside the narrow limits of
copyright law without the consent of
BASI GmbH is not allowed and is liable
to prosecution.

This applies in particular to duplications,
translations, microfilming and importing
and processing in electronic systems.

BASI GmbH, Konstantinstraße 387,
41238 Mönchengladbach, Germany